

Volla Tablet Repair Manual

Version 1.0, 2026

Display Replacement

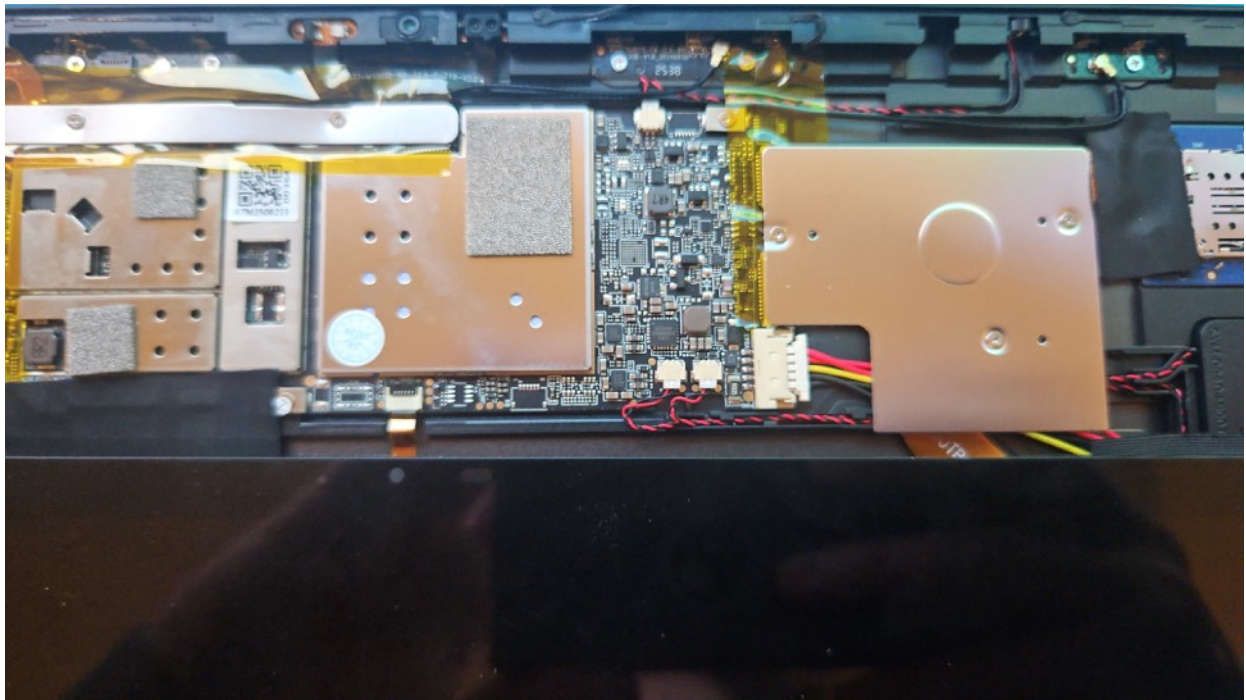
- Ensure device is turned off
- Apply heat to edge of the screen, using hot air gun or heat plate.
- Using suction cup lift the display and insert plastic pick.



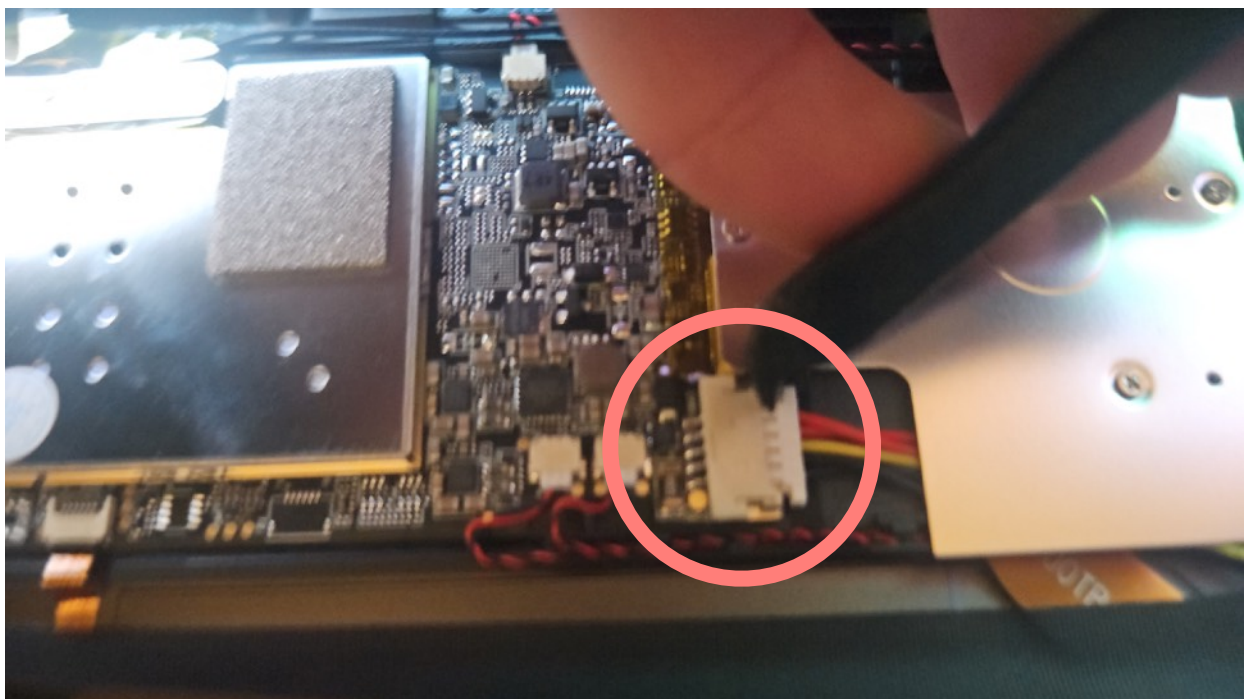
- Cut around the edge with the pick.

vollan

- Gently lift the display and move it out of the way (to the bottom edge of the tablet) enough to expose the motherboard.

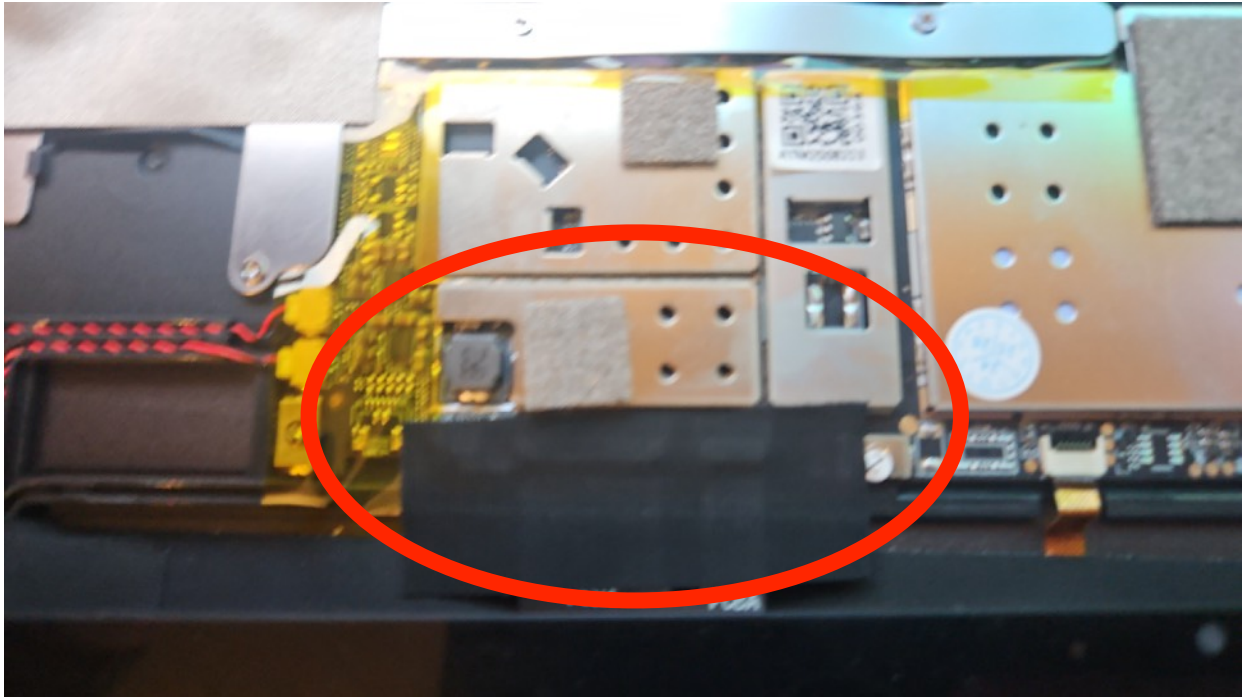


- Disconnect the battery connector on the right side of the motherboard.

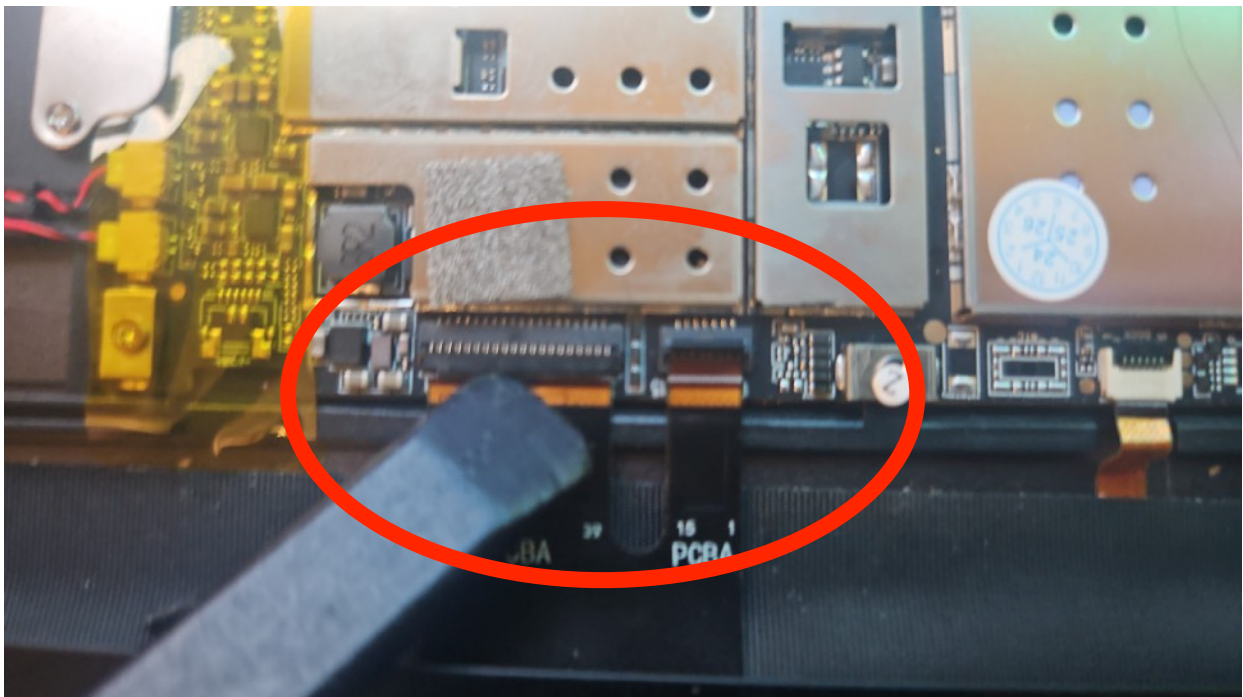


volla

- Remove tape covering display fpc (flex circuit).



- Lift locking tab of the connectors.



- Remove old display.
- Connect new display, reapply tape.
- Re-connect the battery.
- Install new display using new seal/adhesive.

Battery replacement

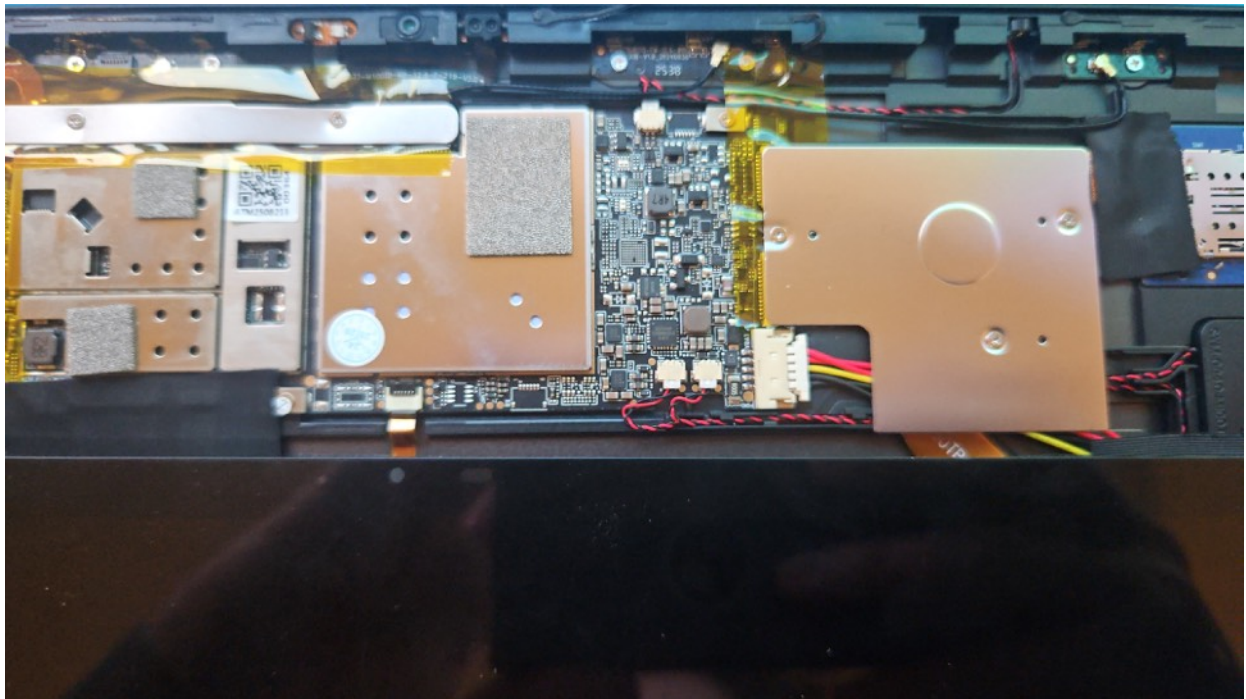
- Ensure device is turned off.
- Apply heat to edge of the screen, using hot air gun or heat plate.
- Using suction cup lift the display and insert plastic pick.



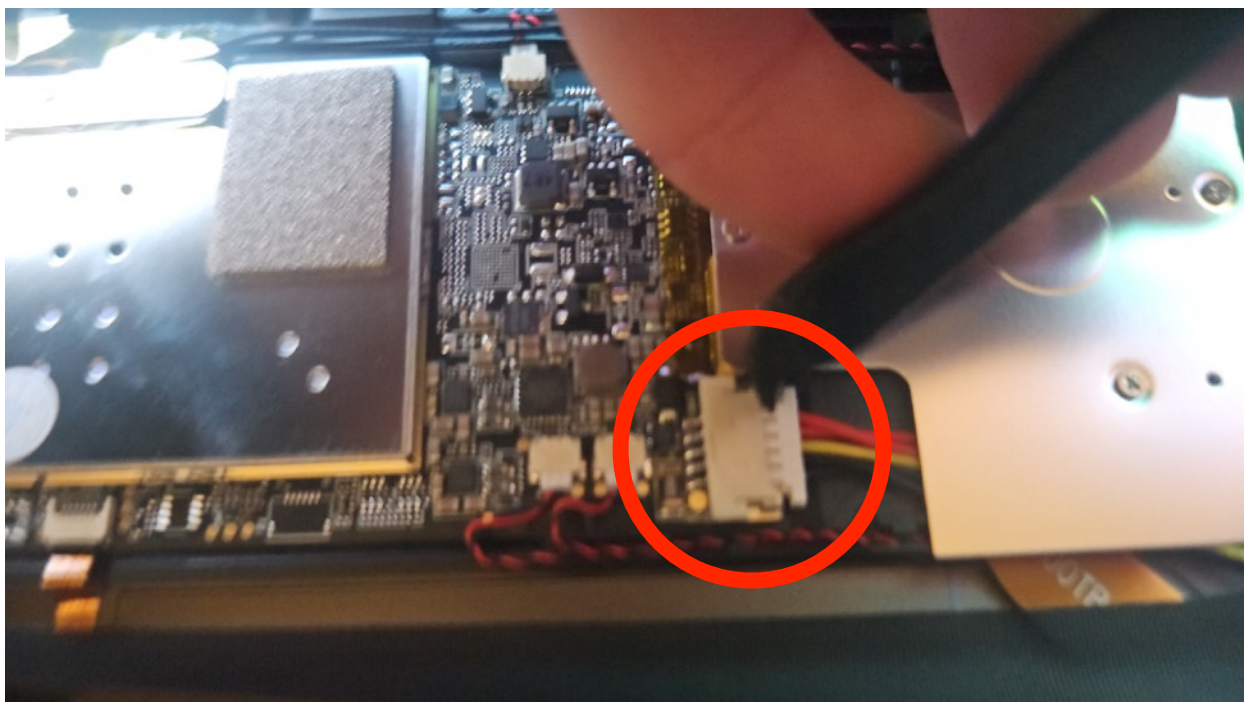
- Cut around the edge with the pick.

volla

- Gently lift the display and move it out of the way (to the bottom edge of the tablet) enough to expose the motherboard.

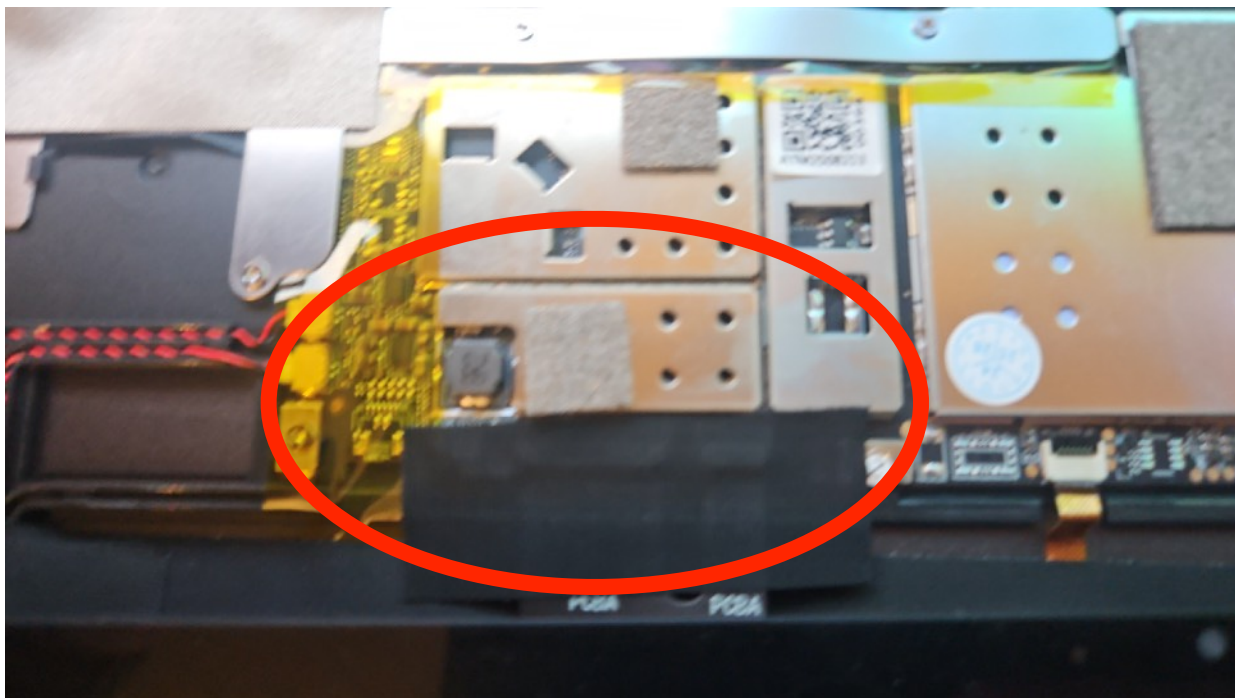


- Disconnect the battery connector on the right side of the motherboard.

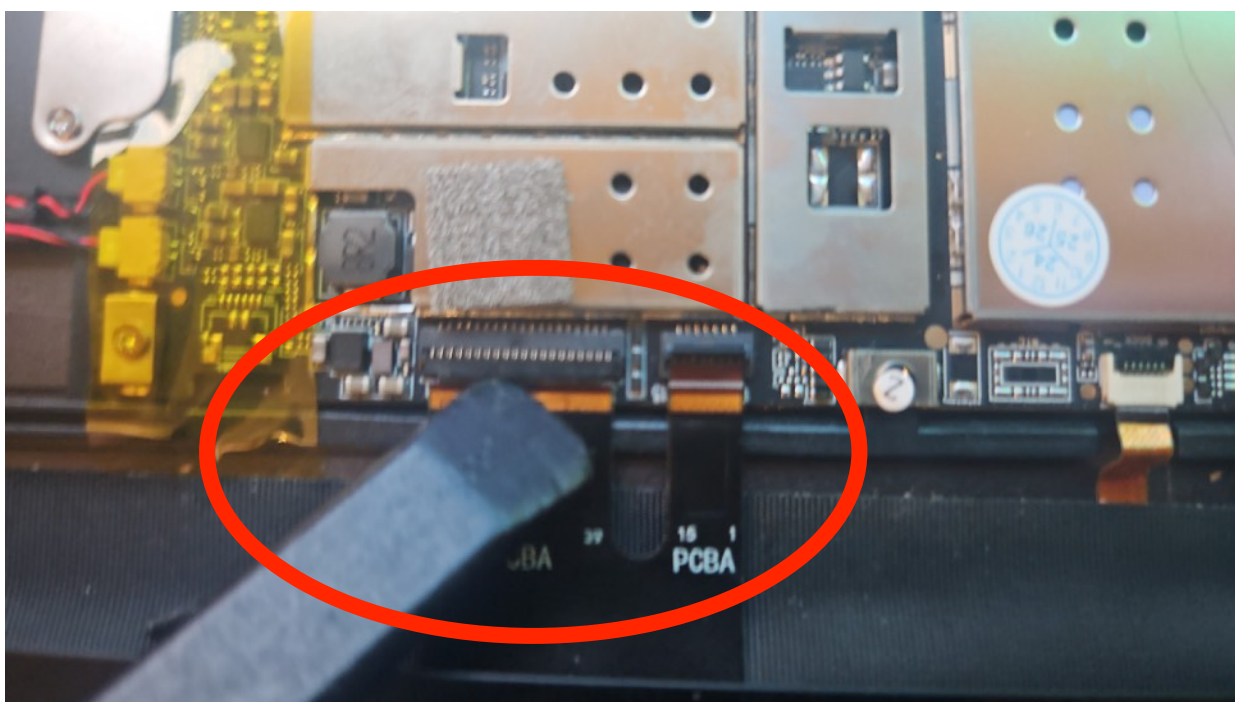


volla

- Remove tape covering display fpc.

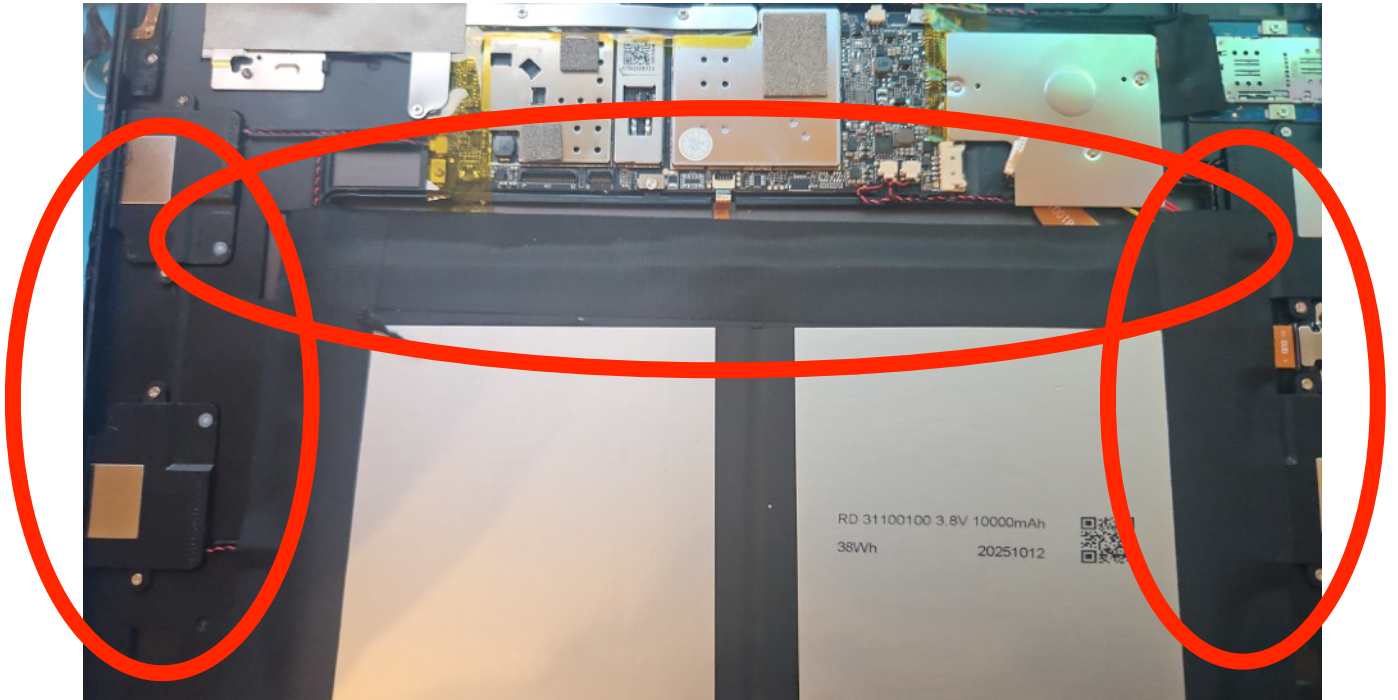


- Lift locking tab of the connectors.



- Remove display.

- Remove tape around the battery.



- Apply heat to the back of the device.
- Pry battery off using plastic tools, be extremely careful, li-ion cell have extremely thin packaging and strong adhesive, puncturing battery will lead to: release of toxic fumes, fire, explosion, that can result in: destruction of the device, damage to property, sever burns, death.
- Install new battery.
- Connect display, reapply tape.
- Connect the battery.
- Install new display using new seal/adhesive.

USB-C port Replacement

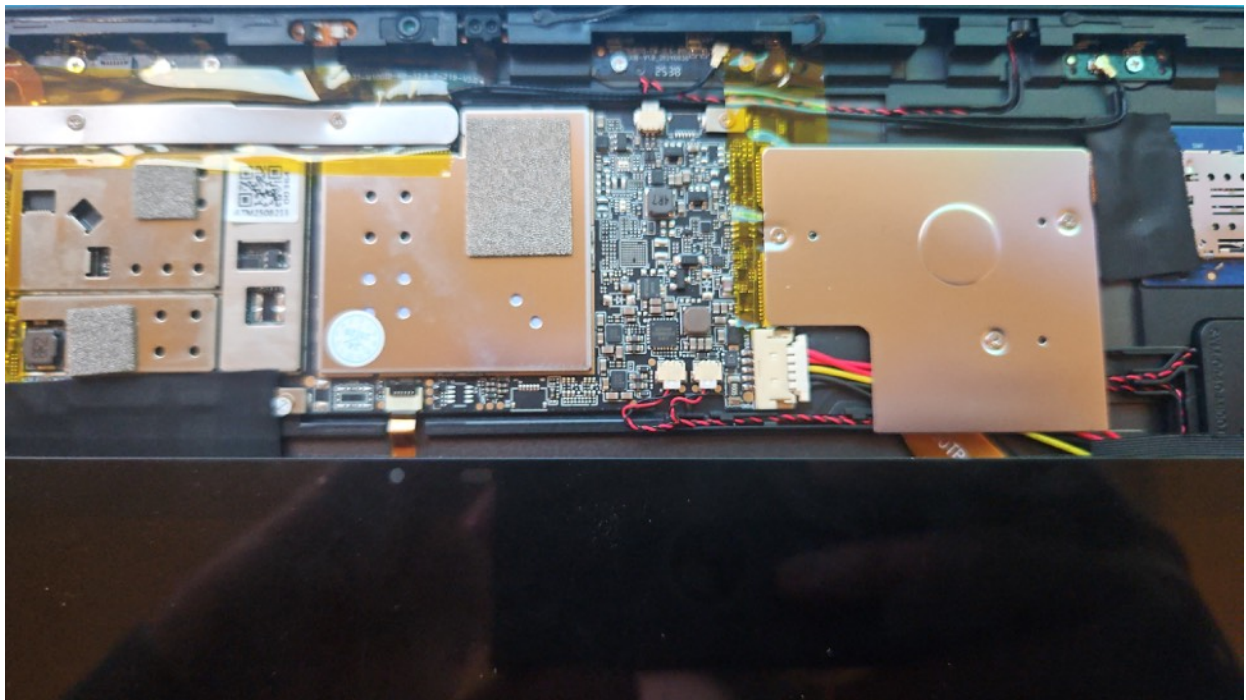
- Ensure device is turned off
- Apply heat to edge of the screen, using hot air gun or heat plate.
- Using suction cup lift the display and insert plastic pick.



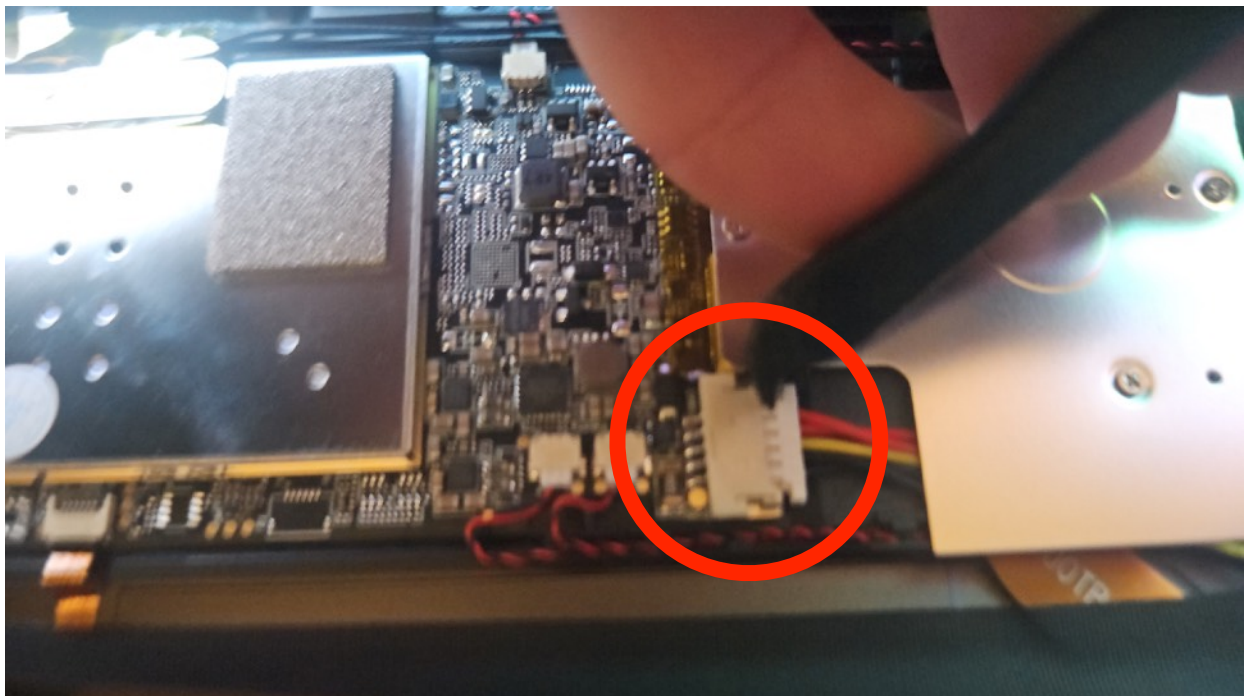
- Cut around the edge with the pick.

volla

- Gently lift the display and move it out of the way (to the bottom edge of the tablet) enough to expose the motherboard.

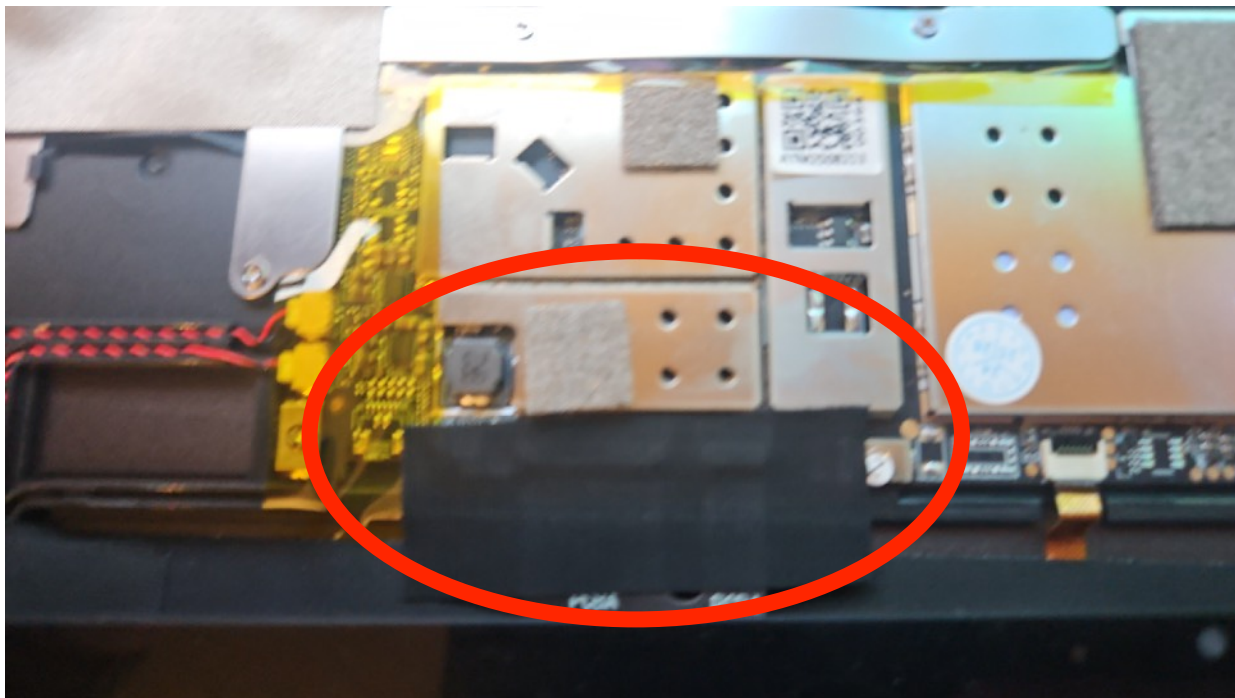


- Disconnect the battery connector on the right side of the motherboard.

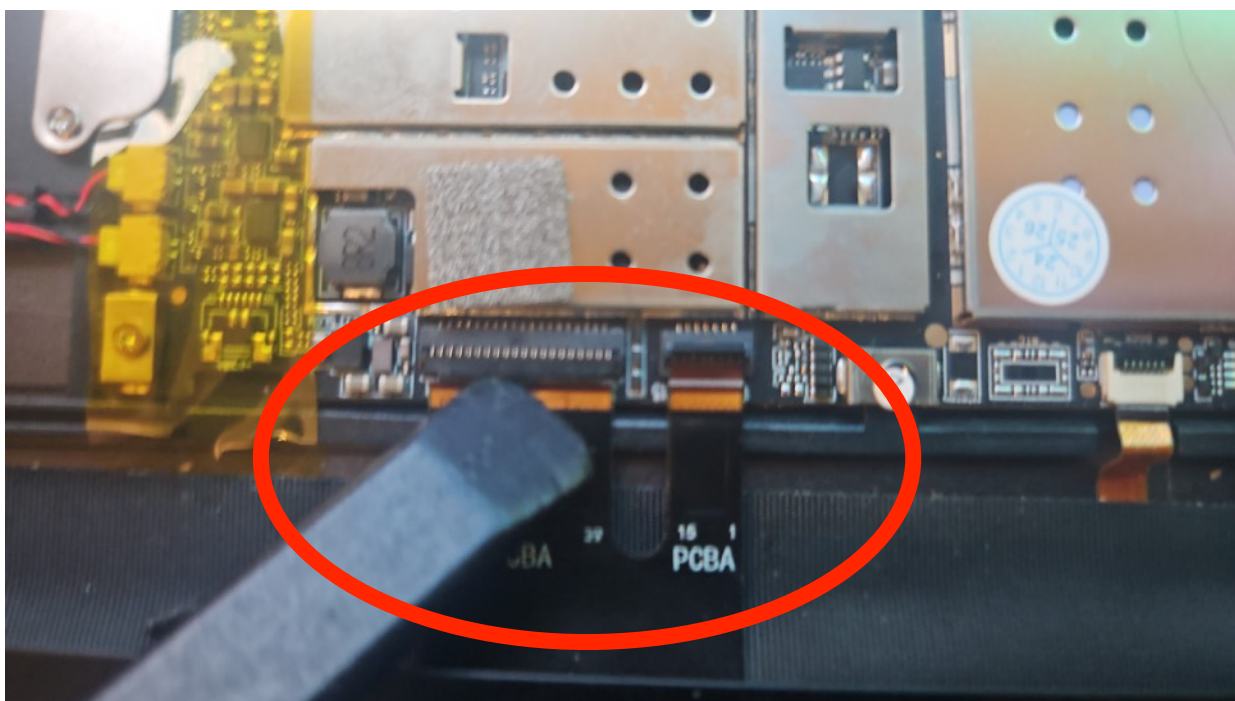


vollan

- Remove tape covering display fpc.



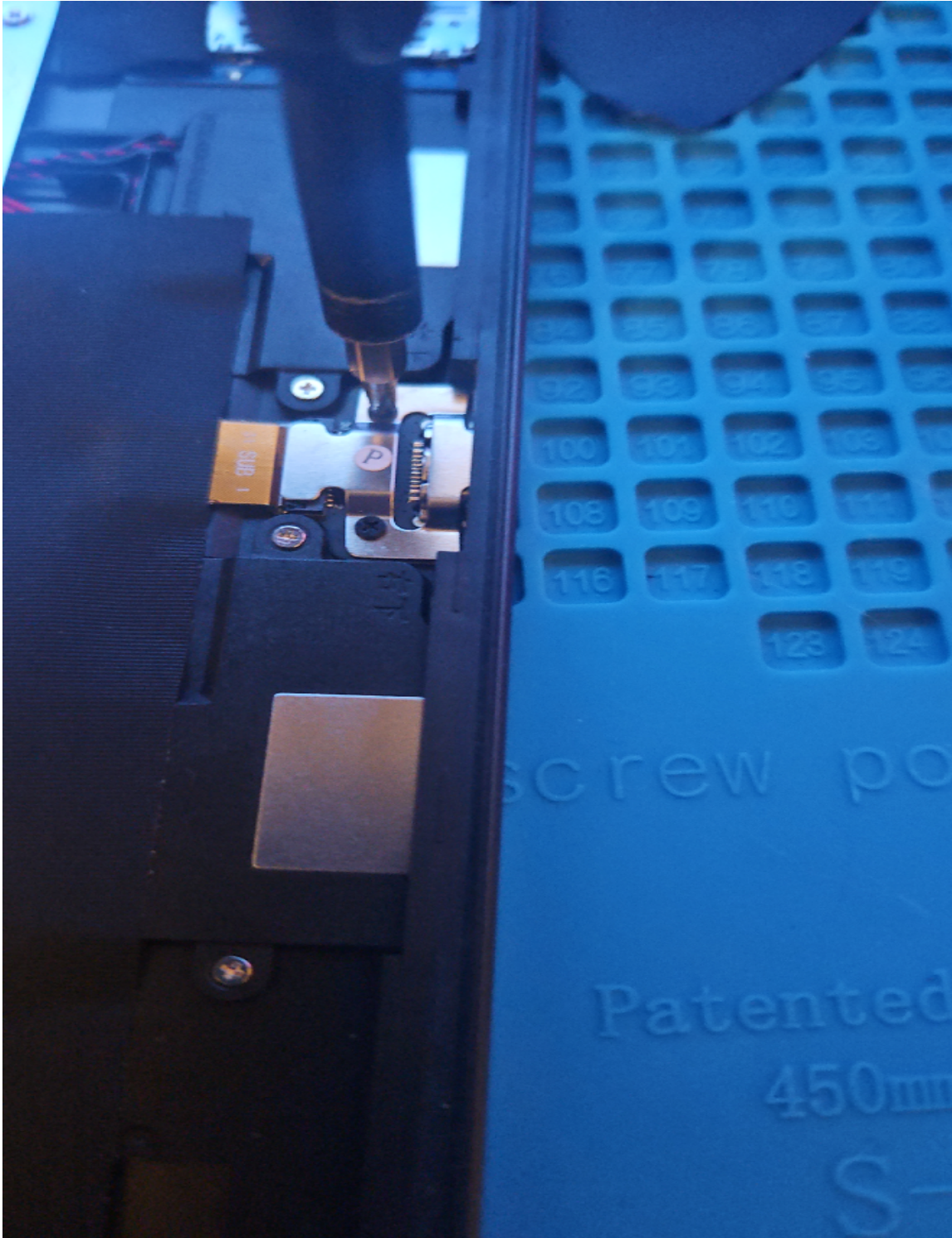
- Lift locking tab of the connectors.



- Remove display.

vollan

- Remove 2 screws holding usb pcb retention bracket.



- Remove metal retention bracket.

volla

- Unclip the fpc connector, by pushing black part up.



- Replace usb pcb.
- Re-apply retention bracket.
- Connect display, reapply tape.
- Re-connect the battery.
- Install display using new seal/adhesive.