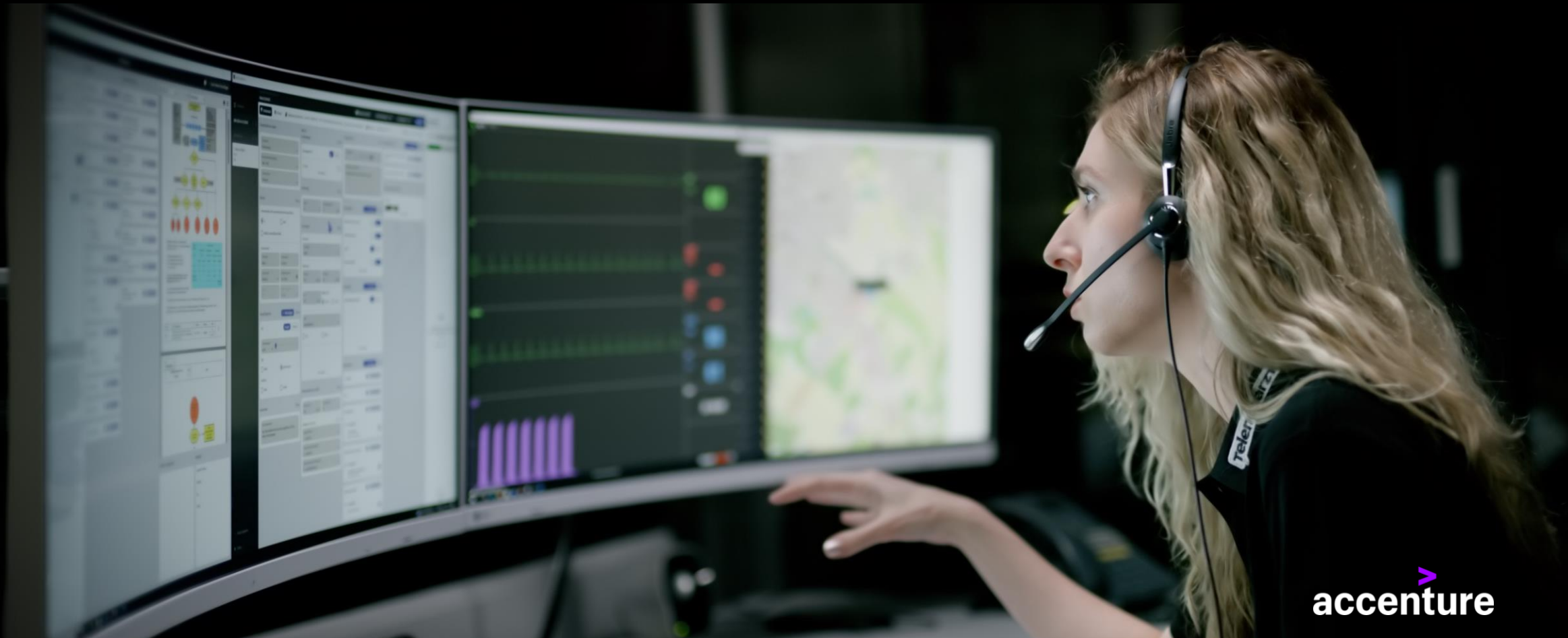


# connect4rescue –

# Better connected in an emergency

umlaut telehealthcare GmbH | Part of Accenture



# German emergency medical service



## Background

- Rendezvous system
- German emergency system heavily relies on physicians
- Paramedics are not allowed to administer most of the medications needed in EM-missions
- Physician is often requested subsequently

## Challenge EMS

- Increasing number of missions requiring an EMS physician
- Treatment is distinctly delayed
- Lack of physicians is getting bigger every year
- Increasing number of missions every year (+5%)
- Trend could not be reversed, despite a nationwide increase in EMS physician stations

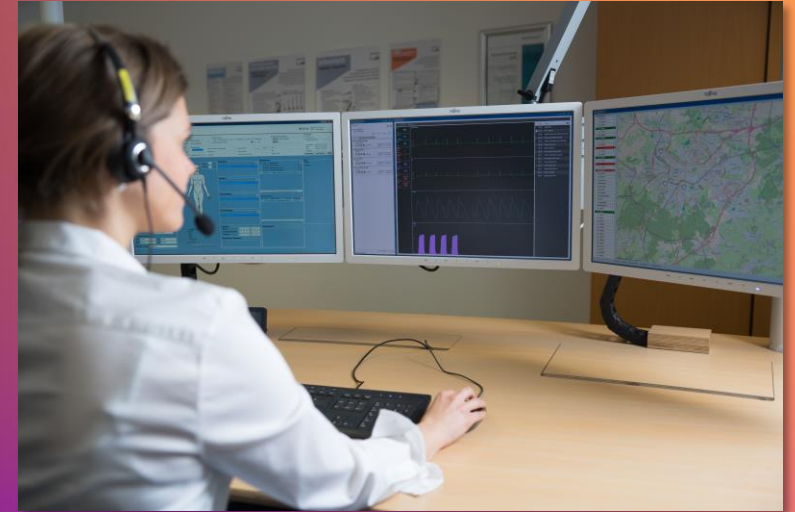
# The Telenotarzt

The „Telenotarzt“ provides telemedical support in emergency medical systems.

A remote physician can join an emergency mission at the push of a button.

Connectivity solutions that are especially designed for this use case provide reliable voice and data communication.

With the support of the paramedics the remote physician can be as effective as if he was on the mission site.



[VIDEO klick here](#)

# The EMSiX Telenotarzt System

The Original – Since 2014.

## Cloud-based Backend System

The core of the system – highly reliable and scalable micro-service architecture.

## Ambulance Equipment

Creating easy-to-use reliable communication between ambulance and telemedic.

## Telemedical Workplace Application

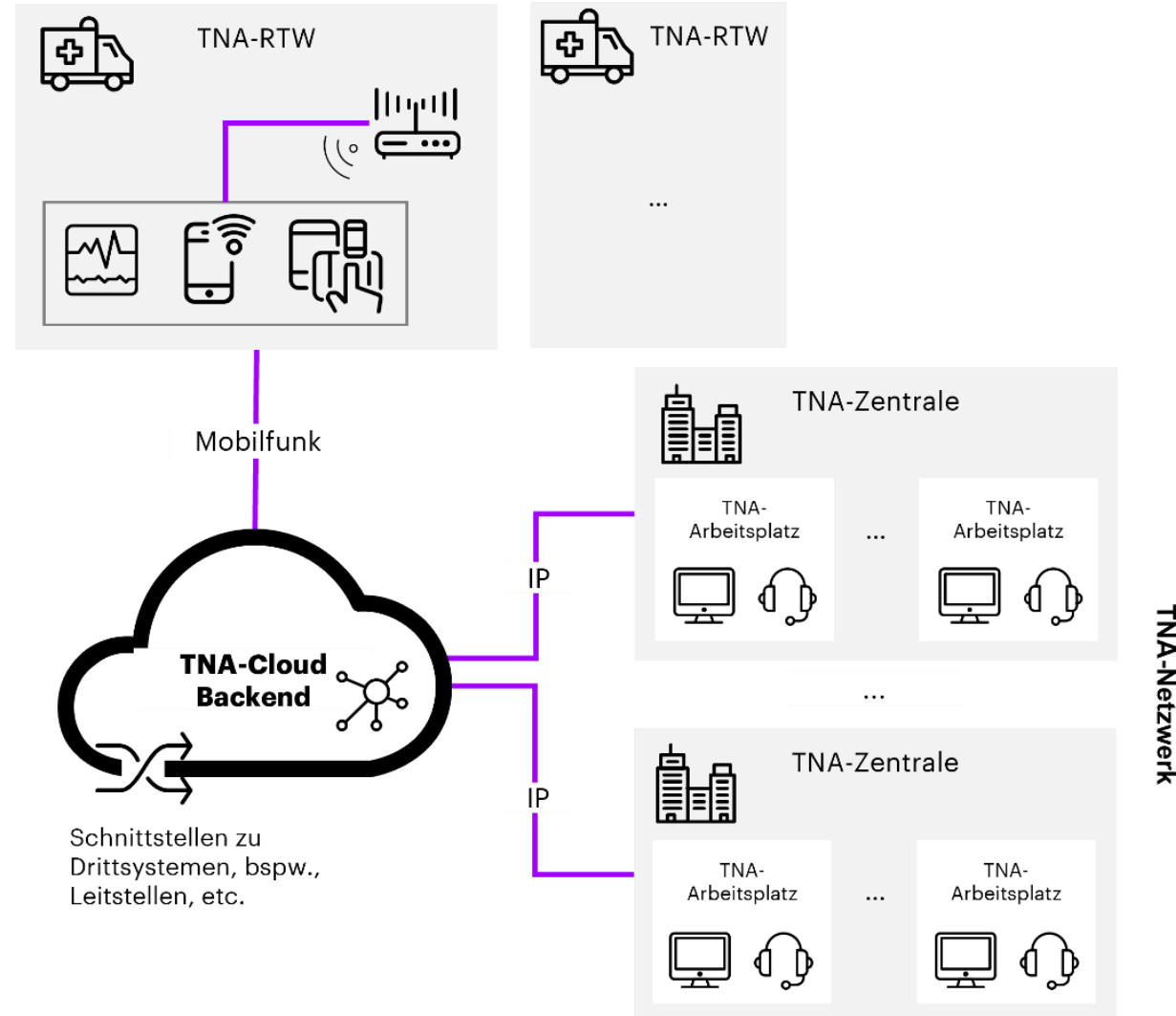
Guideline-based expert and documentation system. Made for stationary or mobile use.

## 3rd Party Systems Interfaces

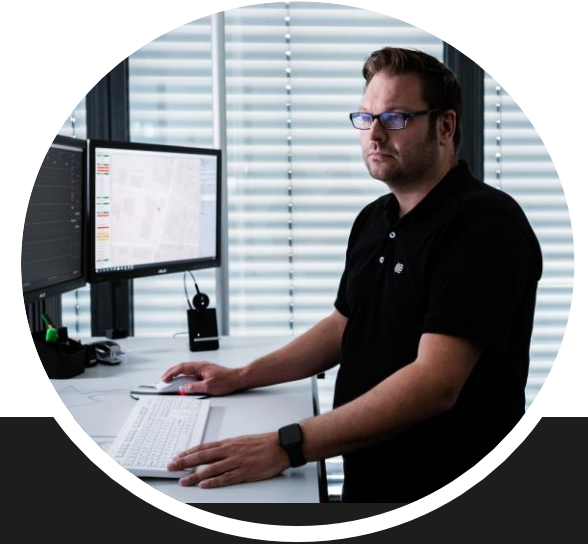
Closing the gap between different involved systems such as dispatch centers, hospitals or other documentation systems.

## Paramedics applications

Contacting and sharing information with the telephysician. Digital documentation. Direct transmission of vital data, photos and videos for initial diagnosis and medical treatment.



# The Telenotarzt in figures...



## ... data and facts

**12**

emergency care  
catchment  
areas

**> 60k**

successful tele-  
EMS-physician  
operations

**+ 150**

equipped  
ambulances

**75**

Tele-emergency  
physicians

**10**

years of  
experience

**12 Min.**

average operation  
time in single  
mission

# Accenture Offering

Telenotarzt-as-a-Service

**Provisioning of (Tele-)Physicians**

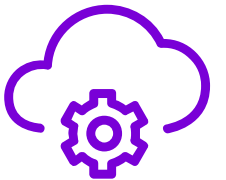
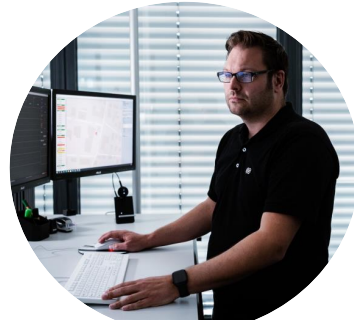
**Provisioning (sales) of Hardware**  
Telemedic Workplace, Ambulance Equipment,  
Paramedic Equipment

**Software-as-a-Service**  
Cloud Backend, Telemedic Workplace, Paramedic  
Applications

**Support (Hotline), Training**  
(Physicians, Paramedics)

**Hardware Component Service**  
Installation (Workplace, Ambulance),  
Maintenance, RMA

**24/7 365 Operations**  
And Software Maintenance





# **Our Connectivity Solutions**

**powered by Volla**

# peeq®SMART

providing the best connectivity from two different cellular networks – completely automated.



- **Dual-SIM Dual-Standby (DSDS) device can be registered to two different cellular networks at a time**
- **peeqSMART monitors both networks and situationally selects the best network as the active network for both voice and data**
- **peeqSMART can connect to WiFi as an additional optional interface for data**
- **peeqSMART provides Internet Access for other devices connected to the peeqSMART softAP WiFi**

# peeq®SMART

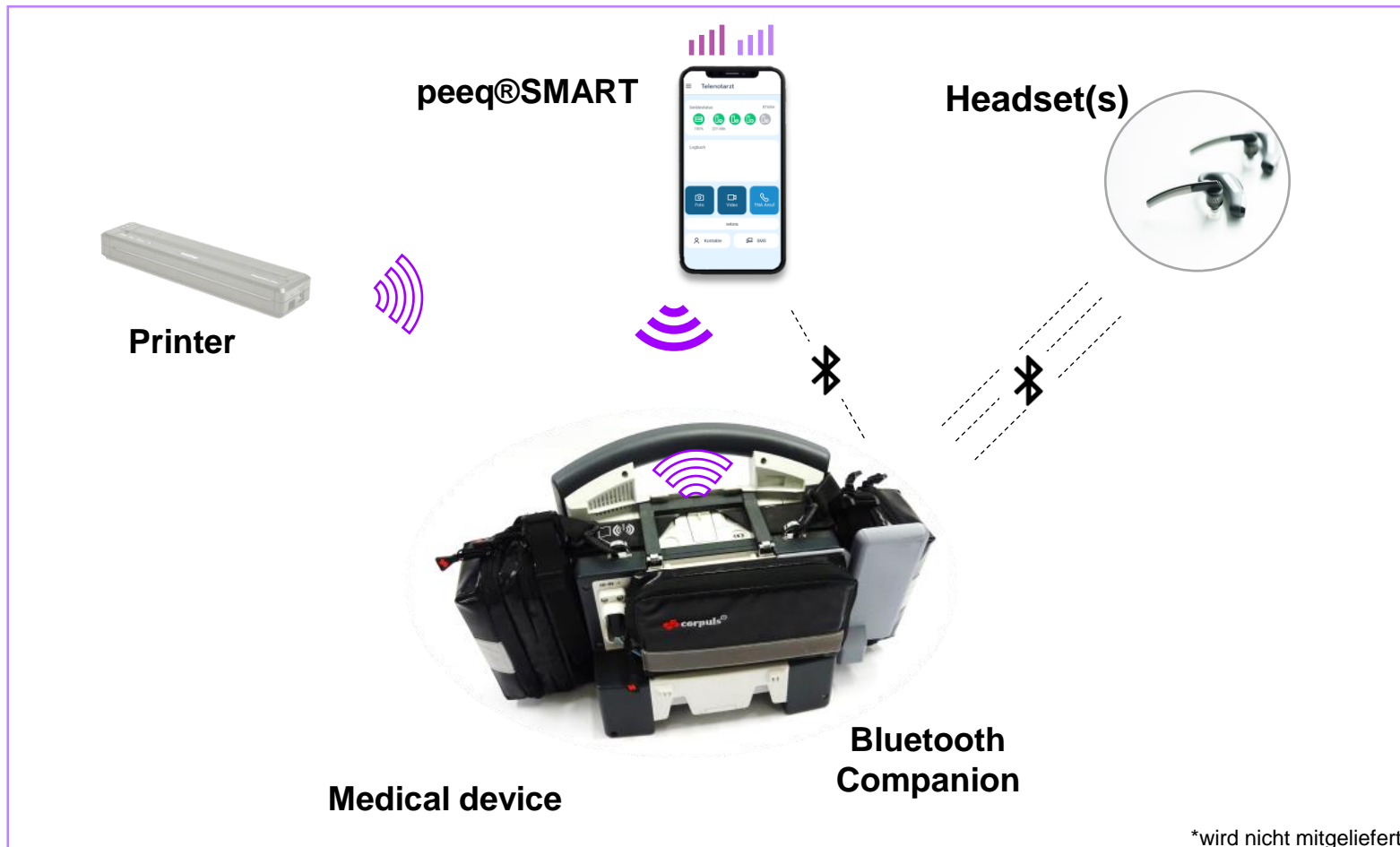
Making the telephysician part of the mission at the push of a button



- **All networking and connectivity functionality completely automated – paramedics can focus their attention to the patient**
- **peeqSMART adapts to the local connectivity situation – creating a robust communication channel with up to 99% availability\***
- **This functionality cannot be built with COTS Smartphones**

# On-Site Connectivity

## peeq®SMART as main communication device



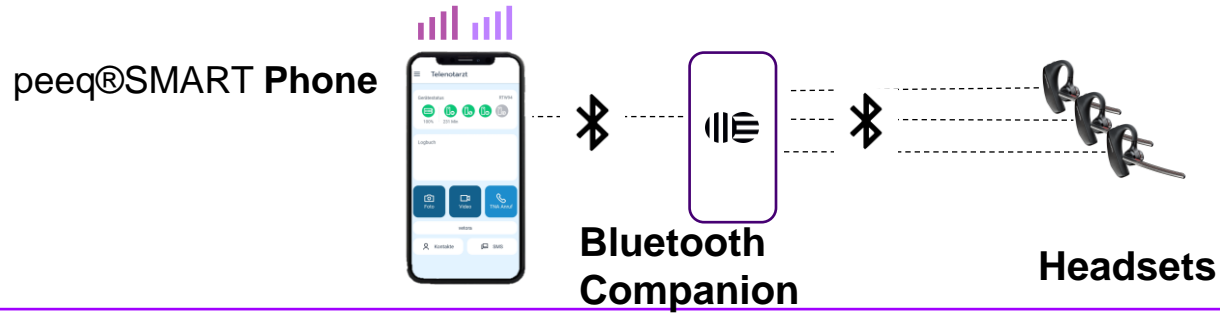
- **WiFi hotspot for medical device**
- **Dual-SIM dual-standby cellular connectivity**
- **Routing of medical device data toward telemedical platform**
- **Voice communication between up to 3 users (headsets) and the remote physician**
- **TNA-app for**
  - **Foto**
  - **Video**
  - **Pre-announcement (triage)**
  - **Voice call**



**peeqBox**

# Mission Connectivity

peeqSMART and peeqBOX



- ✓ Voice telephony (cellular + VoWiFi) via peeqSMART Phone
- ✓ ,one-button‘ TNA call
- ✓ TNA App (pre-announcement, TNA-call, photo, bodycam)



Medical device

- ✓ GDPR-compliant, Google-free
- ✓ Automatic selection of the best network for each situation
- ✓ Connection to WiFi Hotspots (ambulance)
- ✓ Connectivity for medical device
- ✓ Connectivity for other devices
- ✓ Optionally voice telephony

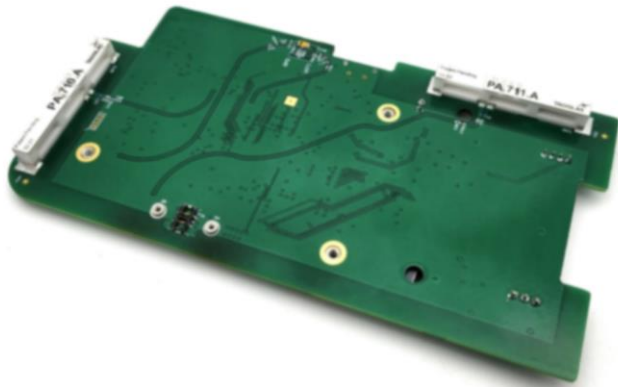
# peeqBOX – the “IoT Smartphone”

- Portable WiFi Router for reliably connectivity
- LTE Dual-SIM Dual-Standby
- Wireguard VPN
- Automatic best network selection and switching
- Remotely configurable
- One-Button Voice Telephony with up to 3 Headsets simultaneously
- Leveraging peeqSMART software
- Android OS provided by **Volla**
- Small and lightweight: 160x85x25 mm, 260g
- Completely automated



# peeqBOX Hardware

High efficiency radio design for best performance in weak coverage situations  
“Headless” Smartphone with extension board connector





# peeqBOX – Integration into equipment setup



# Thank You.



Peter Seidenberg

Technical Director

+49 151 57133444

[peter.seidenberg@accenture.com](mailto:peter.seidenberg@accenture.com)

**[www.connect4rescue.com](http://www.connect4rescue.com)**

**accenture**